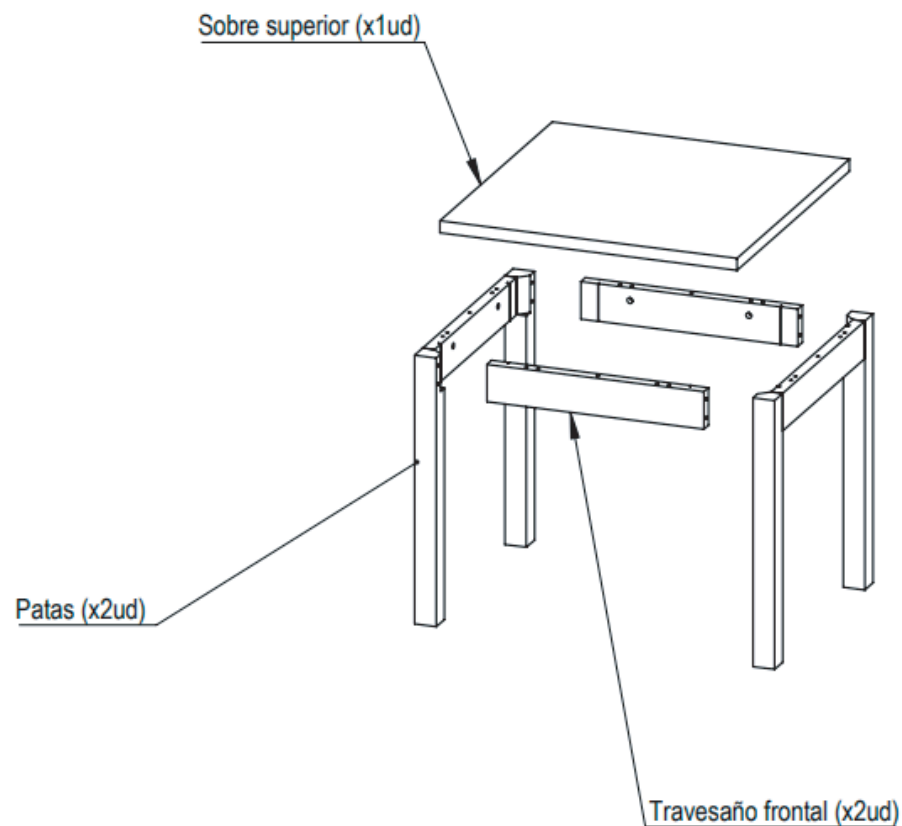


ACABADO ROBLE MEDIO
MESA 80X80

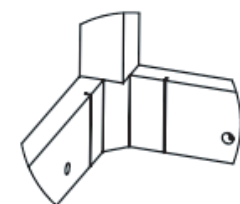




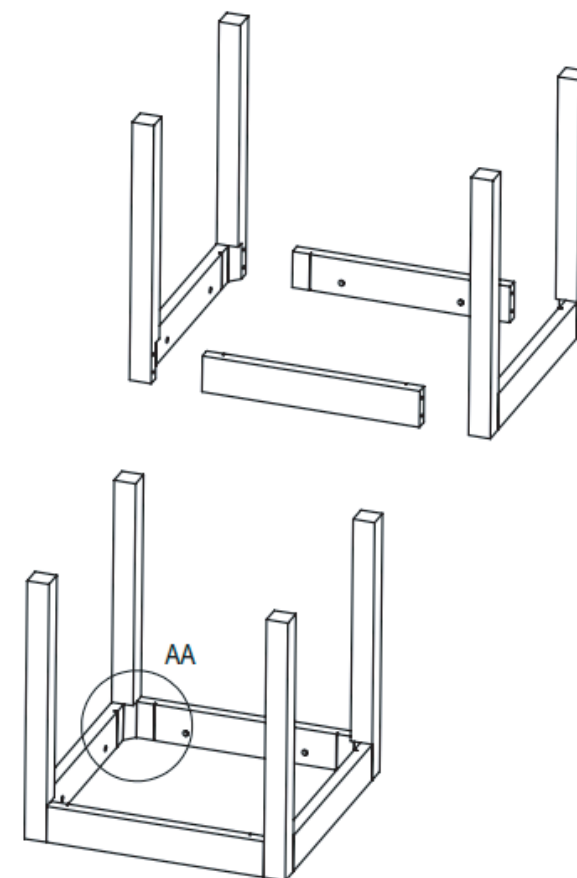
CANTIDAD TOTAL HERRAJES SOMIER

x32ud CRIBILLAS
 x8ud PERNOS
 x8ud EXCENTRICAS
 x20ud TORNILLOS ESCUADRAS
 x4ud ESCUADRAS
 x4ud Arandelas

1 UNIR TRAVESAÑOS INTERIORES CON TRAVESAÑOS FRONTALES
 x8ud A* CRIBILLAS



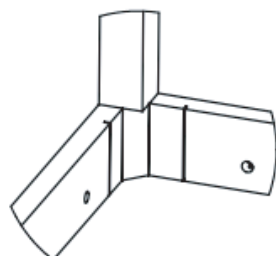
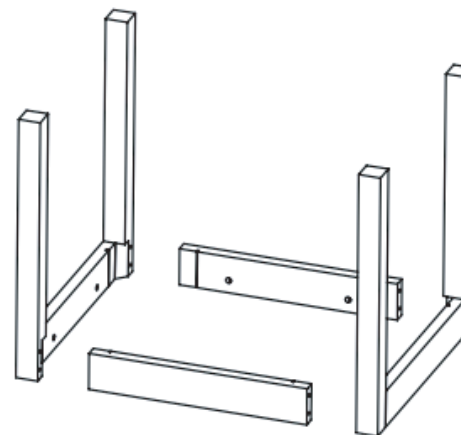
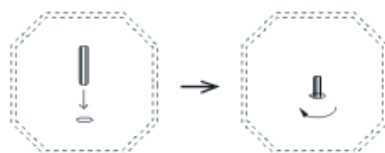
AA
 ENCAJAR CRIBILLAS
 ESCALA 1 : 10



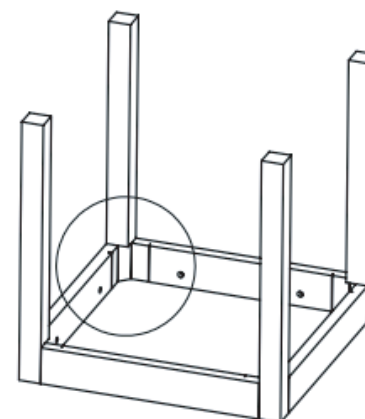
ESCALA 1:20

2 UNIR TRAVESAÑOS INTERIORES CON TRAVESAÑOS FRONTALES

x8ud A* CRIBILLAS



Detalle A Posicionar patas con cribillas
ESCALA 1 : 10



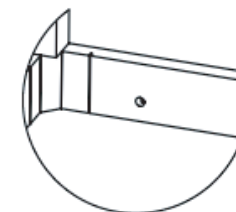
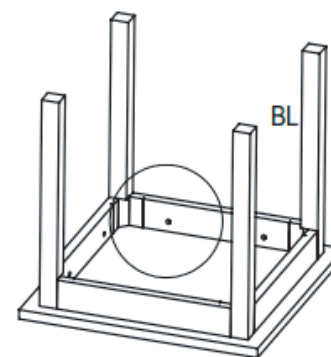
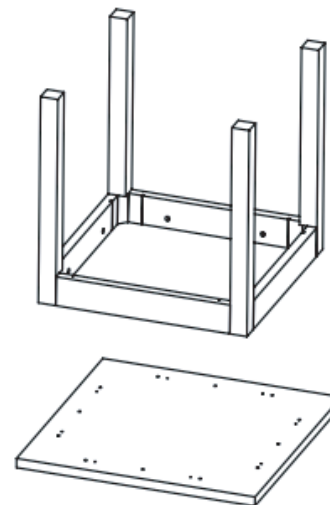
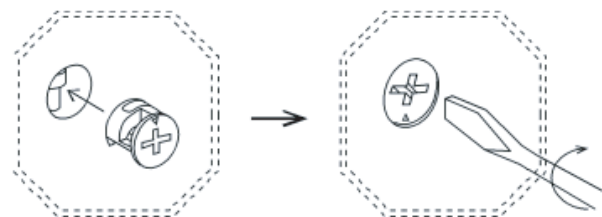
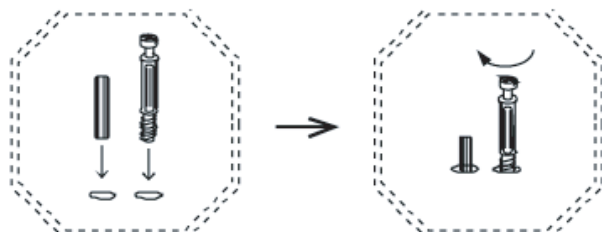
3 UNIR PARTE INFERIOR MESA CON SOBRE

x8ud B* PERNOS

x8ud C* EXCENTRICAS

x12 CRIBILLAS

** Poner cribillas y pernos en el sobre //Encajar excéntricas en travesaños



BL
ESCALA 2 : 25

4

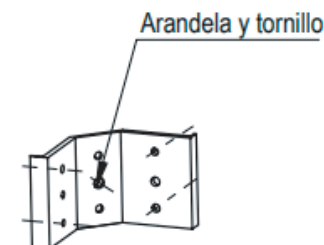
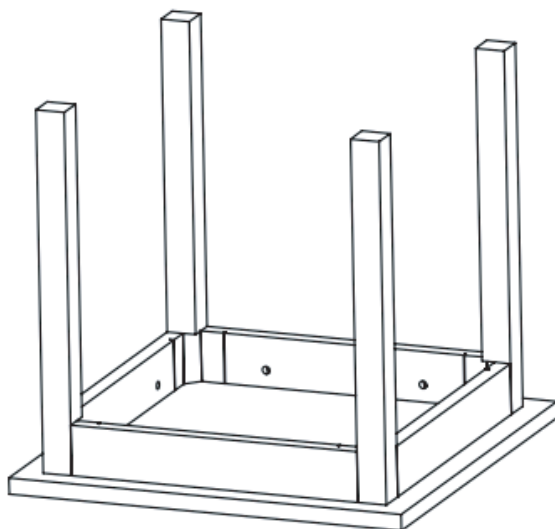
Fijar escuadras en la mesa

x20ud D* Tornillos Escuadras

x4ud E* Escuadras

x4ud F* Arandelas

1. Encajar mediante ranurado les escuadras en las esquinas de la mesa
2. Atornillar 4 esquinas escuadra (x4ud tornillos)
3. Atornillar con arandela y x1ud tornillo agujero central escuadra



ESCALA 1:20